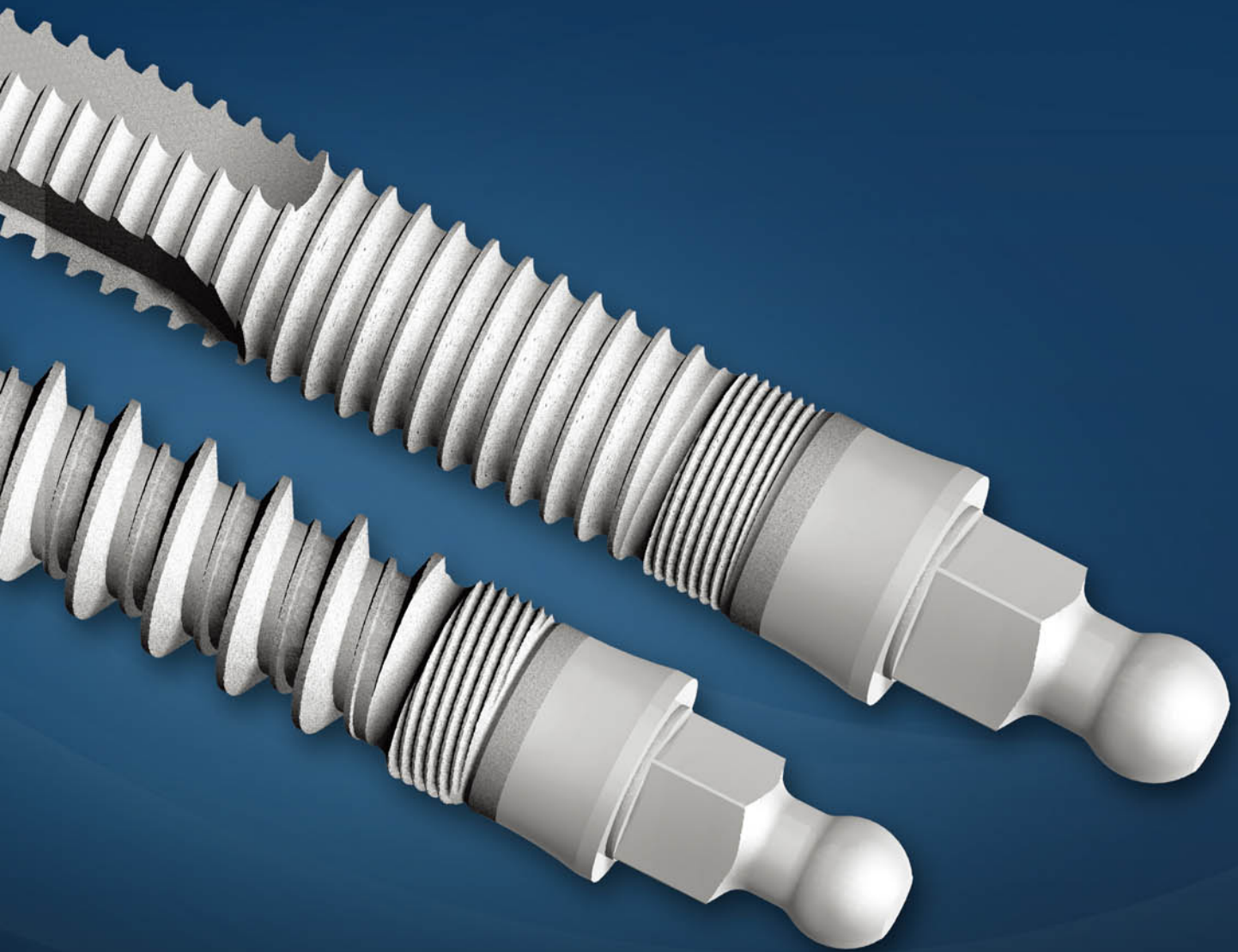


MILD

MINI IMPLANT SYSTEM

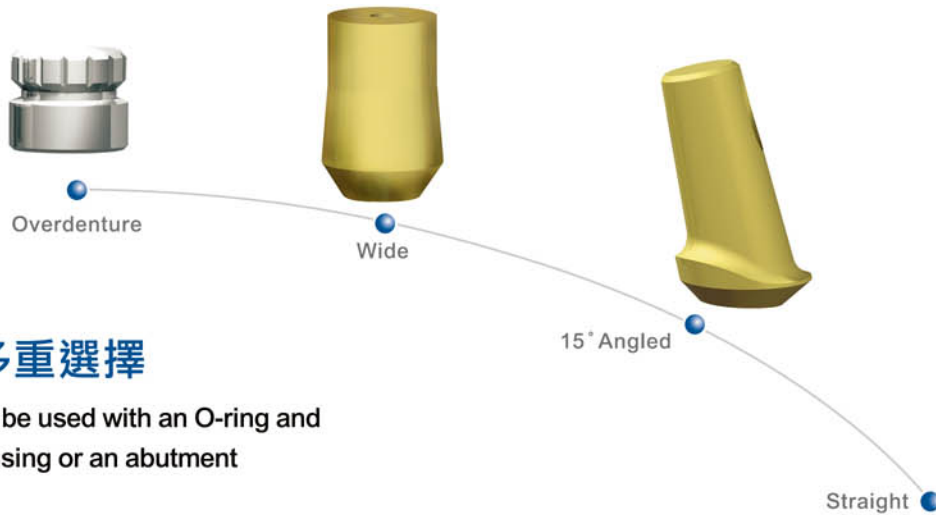
微型植體系統

3.0 mm (Fine / Wide Pitch)



超潔淨的奈米表面處理技術

MILO 微型植體系統
MINI IMPLANT SYSTEM 3.0 mm (Fine / Wide Pitch)



二階多重選擇

MILO can be used with an O-ring and Metal Housing or an abutment



全口固定式 病例

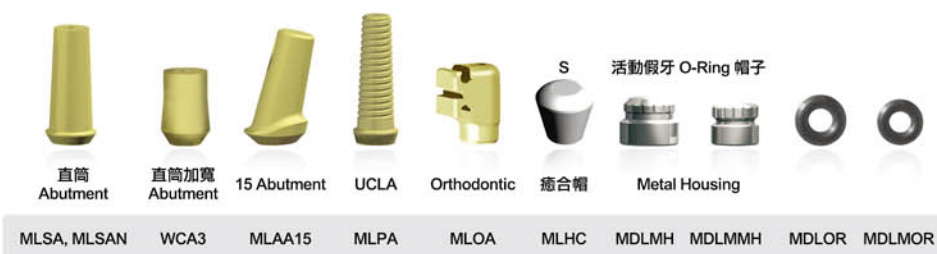


植體規格表

植體直徑	SCR	產品編號 - 植體長度				
3.0mm細螺紋	2mm	MLF3010	MLF3011	MLF3013	MLF3015	
3.0mm寬螺紋	2mm	MLW3010	MLW3011	MLW3013	MLW3015	MLW3017
3.0mm寬螺紋	4mm	MLW3010L	MLW3011L	MLW3013L	MLW3015L	MLW3017L

例：植體編號MLF3011、MLW3011、MLW3011L 其長度為11.5mm

MILO 3.0mm 假牙配件



印模配件

